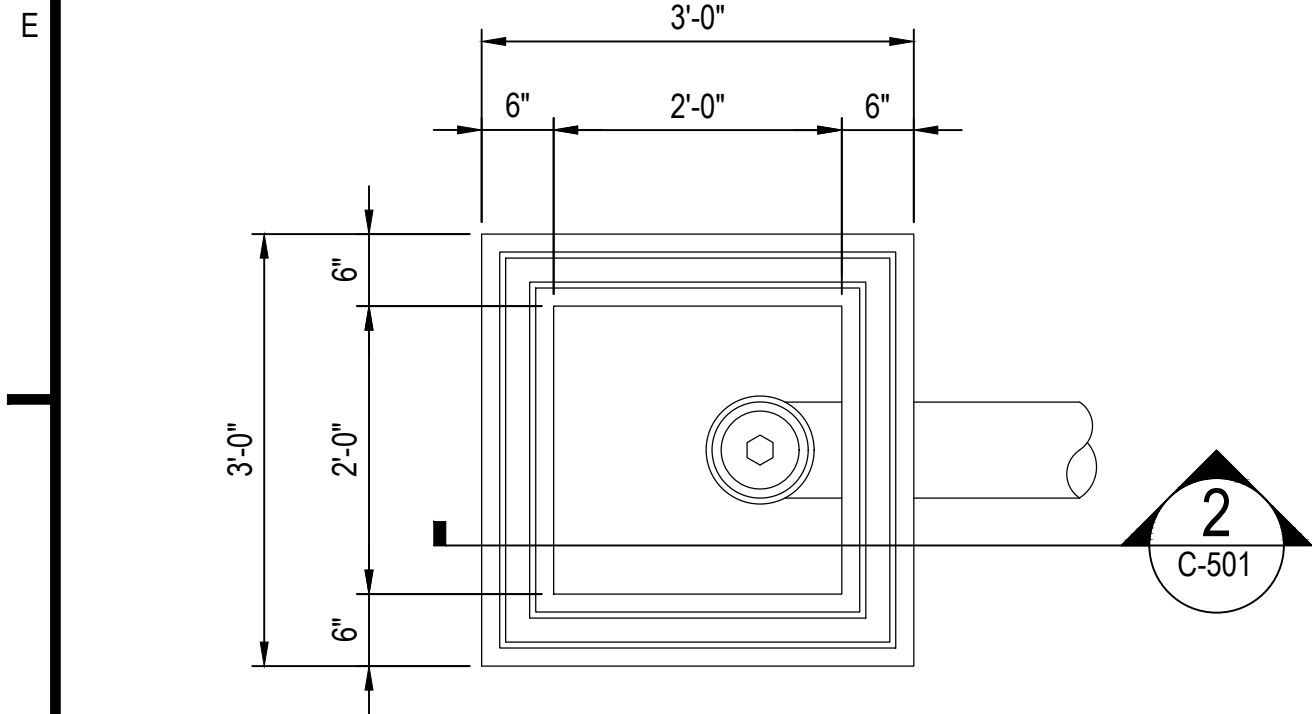
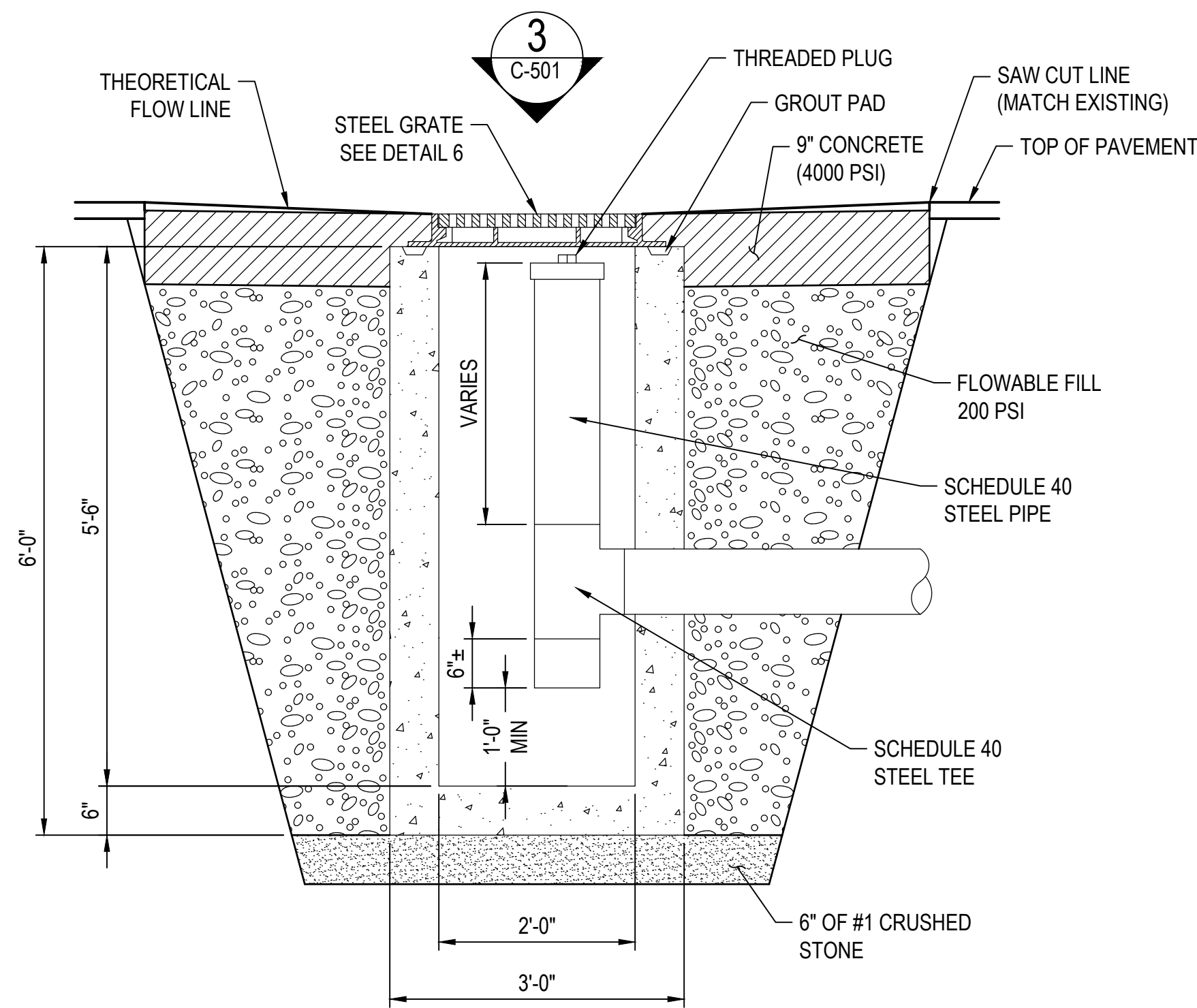


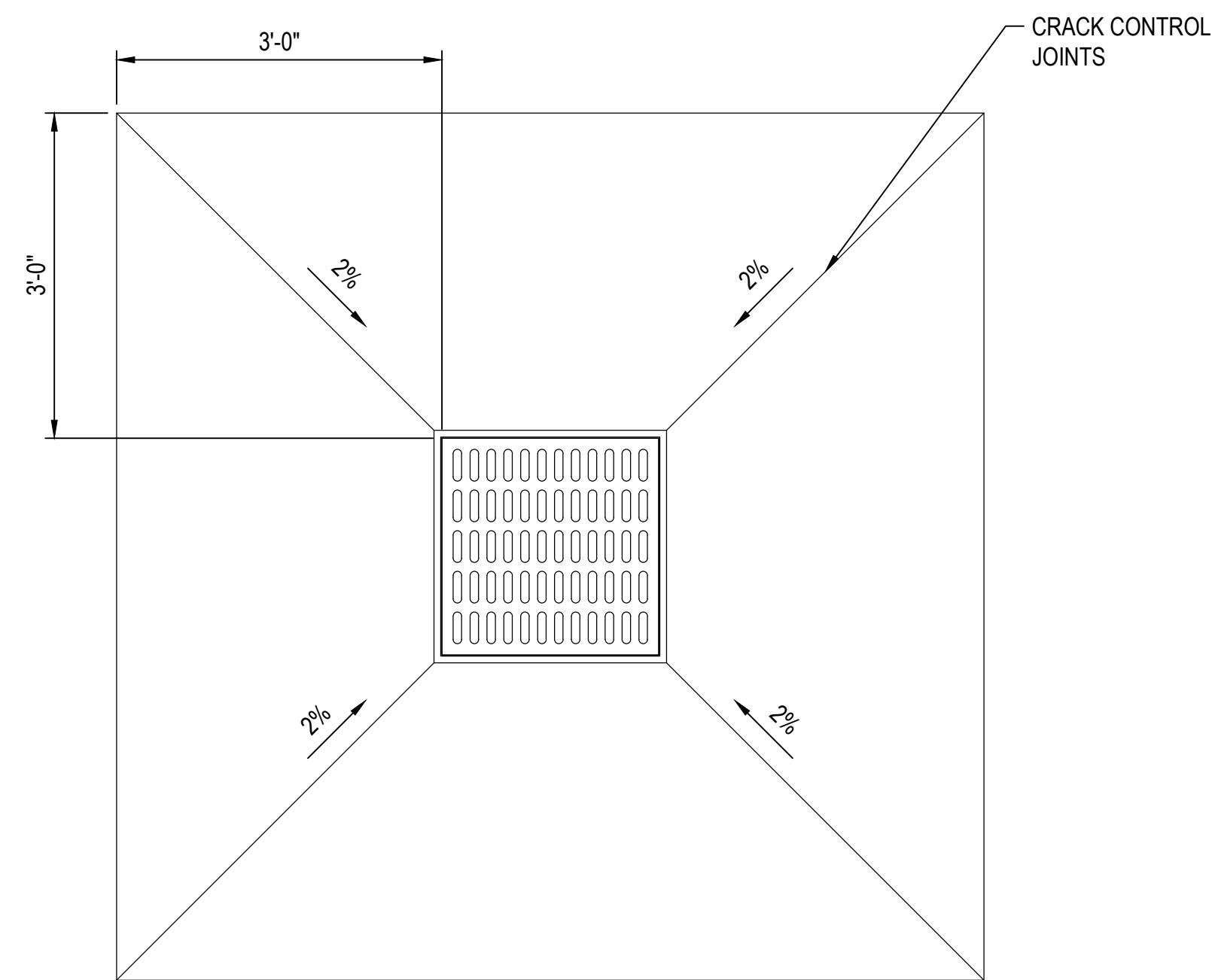
12345678



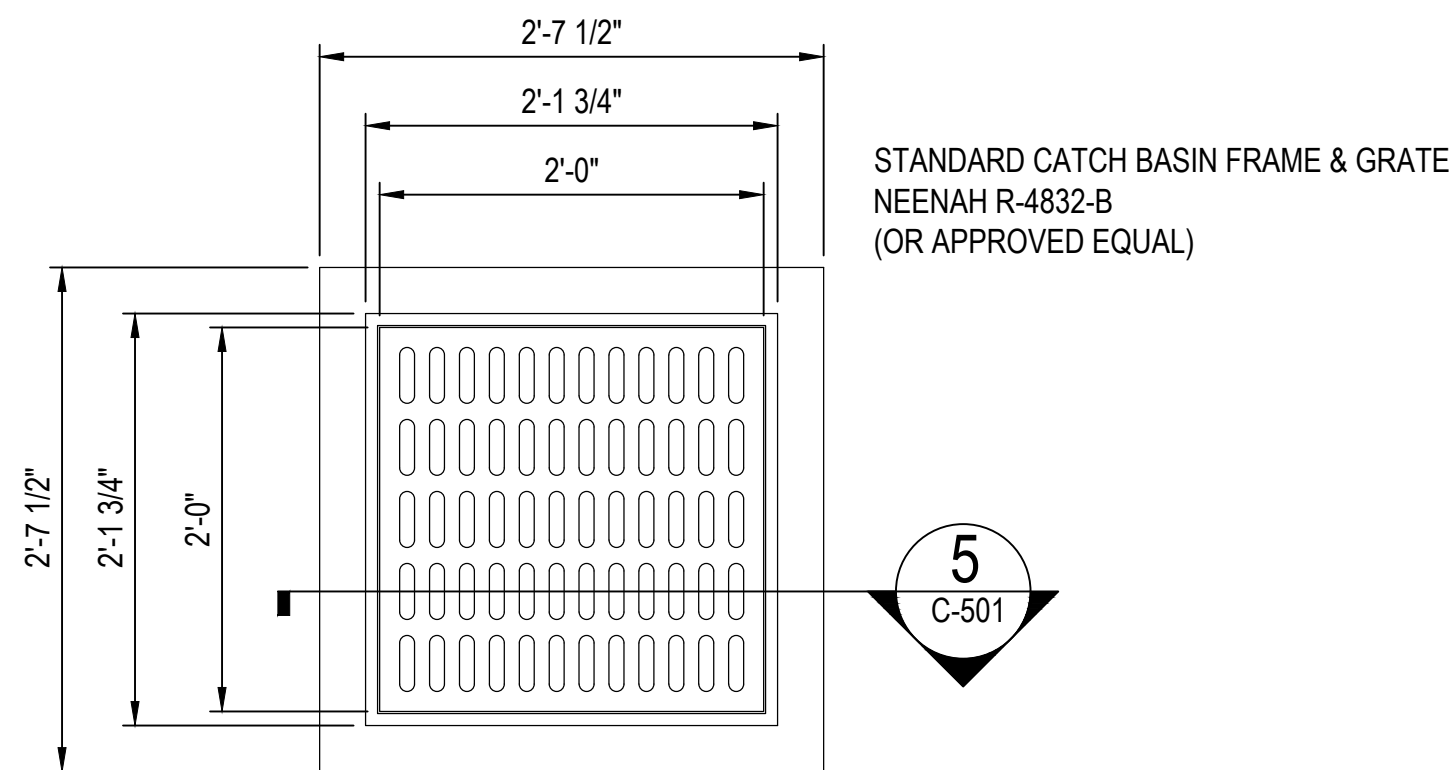
1 CATCH BASIN PLAN
SCALE: 3/4" = 1'-0"



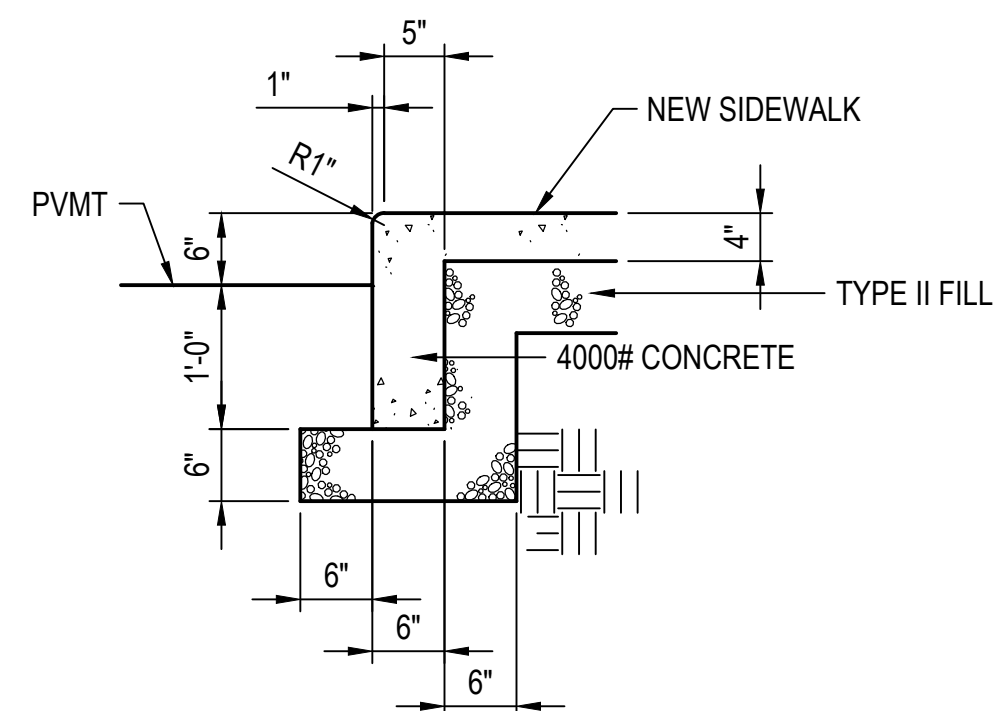
2 CATCH BASIN SECTION
SCALE: 3/4" = 1'-0"
KISTNER CONCRETE PRODUCTS 24" SQ ID CATCH BASIN # 315-T



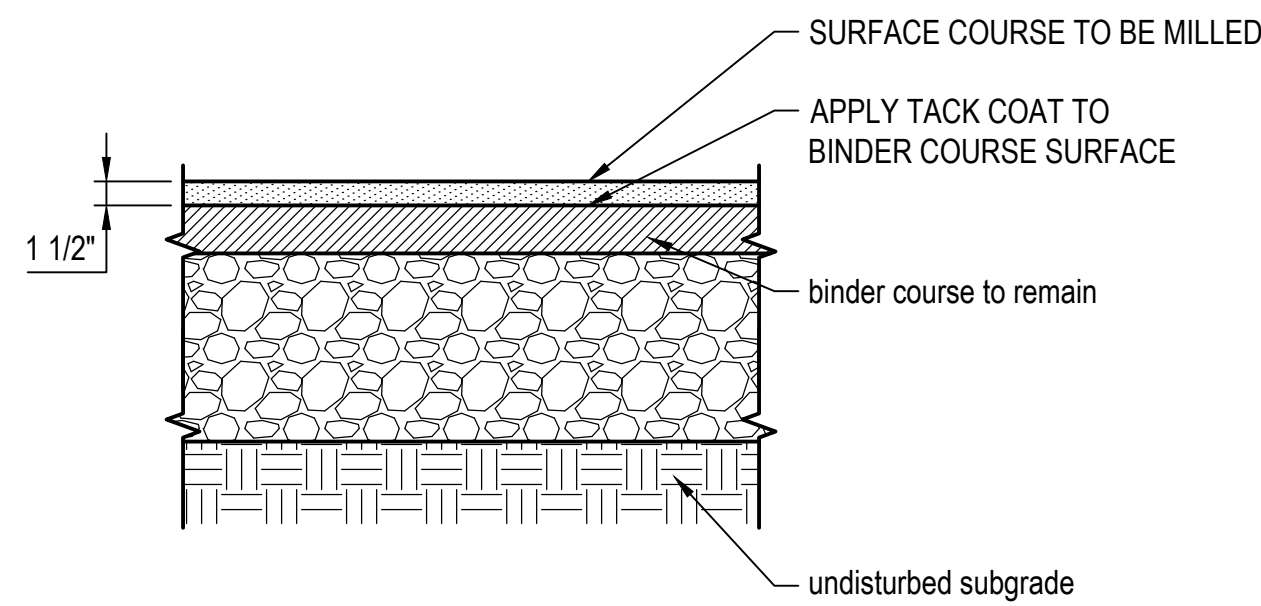
3 CATCH BASIN AND APRON PLAN
SCALE: 3/4" = 1'-0"



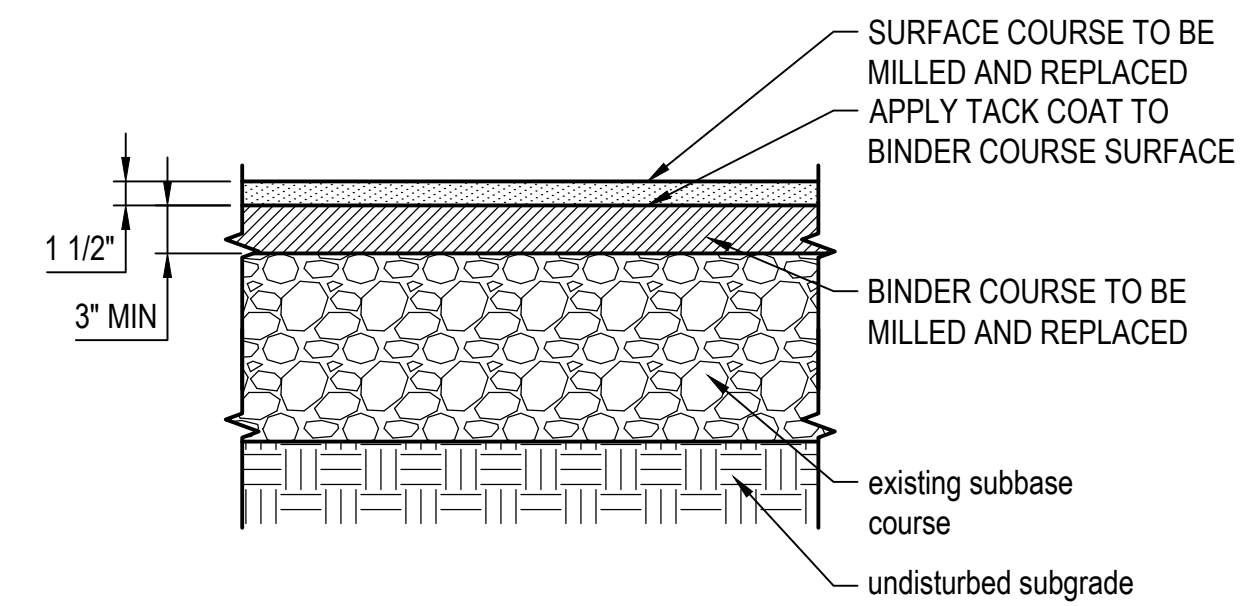
4 CATCH BASIN GRATE
SCALE: 1" = 1'-0"



6 CONCRETE CURB DETAIL
SCALE: 1" = 1'-0"



7 ASPHALT PAVING OVERLAY SECTION
SCALE: 1" = 1'-0"



8 ASPHALT PAVING SECTION
SCALE: NTS

RJR
www.rjpc.com
RJR ENGINEERING P.C.
PROFESSIONAL ENGINEERS
P.O. BOX 344 - 23 Mechanic St.
Springville, New York 14141-0344
PH: (716) 592-3980 FAX: (716) 592-4216



2017-04-19

Copyright 2016 - RJR Engineering, P.C. all rights reserved. No part of this drawing may be reproduced or copied in any form by any means without the written permission of the engineer. Reproduction of this drawing for use in the production of shop and/or field detail drawings is expressly forbidden.

"Unauthorized alteration or addition to any plans, specifications or reports bearing a Licensed Professional Engineer's seal is a violation of Section 7209, subdivision 2, of the New York State Education Law".

CLIENT:

NYS INSURANCE FUND

15 COMPUTER DRIVE WEST
ALBANY, NY 12205

CATCH BASIN REPLACEMENT AND
REPAVING PROJECT
225 OAK STREET
BUFFALO, NY 14203

PROJECT:

REVISIONS:

REV	DESCRIPTION	DATE	DFTR	CHKR
2	ADDITIONAL COMMENTS	2017-04-17	DGA	MCP
1	ADDITIONAL SCOPE	2017-03-21	DGA	MCP
0	BID DOCUMENT	2016-11-17	DGA	MCP

PROJECT NUMBER: 18217
DRAFTER: DGA
CHECKER: MCP
ENGINEER: Br
DRAWING SCALE: SEE DETAIL
DRAWING SIZE: ANSI D

DRAWING TITLE:

SECTIONS & DETAILS

DRAWING NUMBER:

C-501